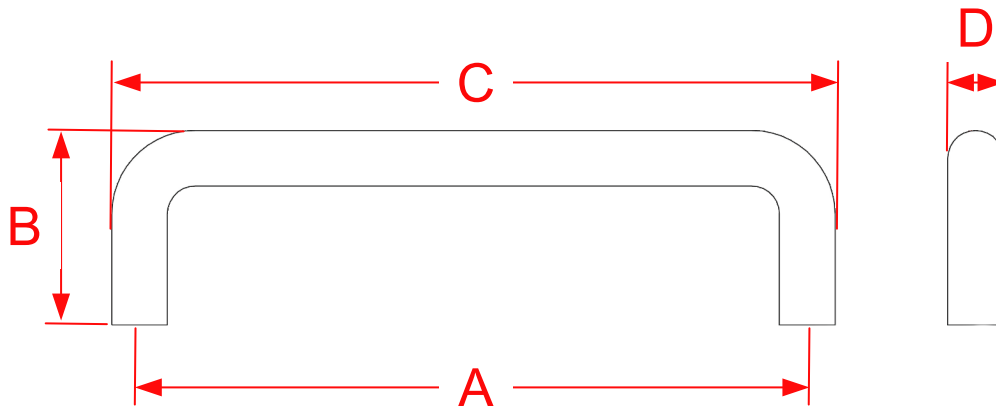


# 750, 751, 752, 753, 754, 755, 775 and 776 Series Cabinet Pulls

Finishes for Life  
TARNISH-FREE GUARANTEE



Part #	A Center to Center	B Projection	C Overall	D Diameter
750	2.5000"	1.2500"	2.8125"	0.3125"
775	2.7500"	1.2500"	3.0625"	0.3125"
751	3.0000"	1.2500"	3.3125"	0.3125"
752	3.5000"	1.2500"	3.8125"	0.3125"
776	3.7500"	1.2500"	4.0625"	0.3125"
753	4.0000"	1.2500"	4.3125"	0.3125"
754	5.0000"	1.2500"	5.3125"	0.3125"
755	6.0000"	1.2500"	6.3125"	0.3125"



Manufacturing Fine Architectural Hardware  
in the USA Since 1927



Copyright 2015  
Colonial Bronze Company  
All rights reserved  
[www.colonialbronze.com](http://www.colonialbronze.com) -  
860.489.9233